

Program Chair

Ananya Roy --- Education Director, Blum Center; Professor, City and Regional Planning

Vice Chair

Clare Talwalker --- Lecturer, International and Area Studies

Advisors

Alexis Bucknam --- Director of Student Programs, Blum Center

Chetan Chowdhry --- Program Coordinator, Student Advising, Blum Center

Education Program Committee

Nezar AlSayyad --- Professor, Architecture; Chair, Center for Middle Eastern Studies

Alain De Janvry --- Professor, Agricultural & Resource Economics

Eva Harris --- Professor, Infectious Disease; Associate Dean, Public Health

Percy Hintzen --- Professor, African American Studies; Chair, Center for African Studies

Khalid Kadir --- Lecturer, International and Area Studies

David Levine --- Professor, Haas School of Business; Chair, Center for Health Research

Genevieve Negron-Gonzales --- Lecturer, International and Area Studies

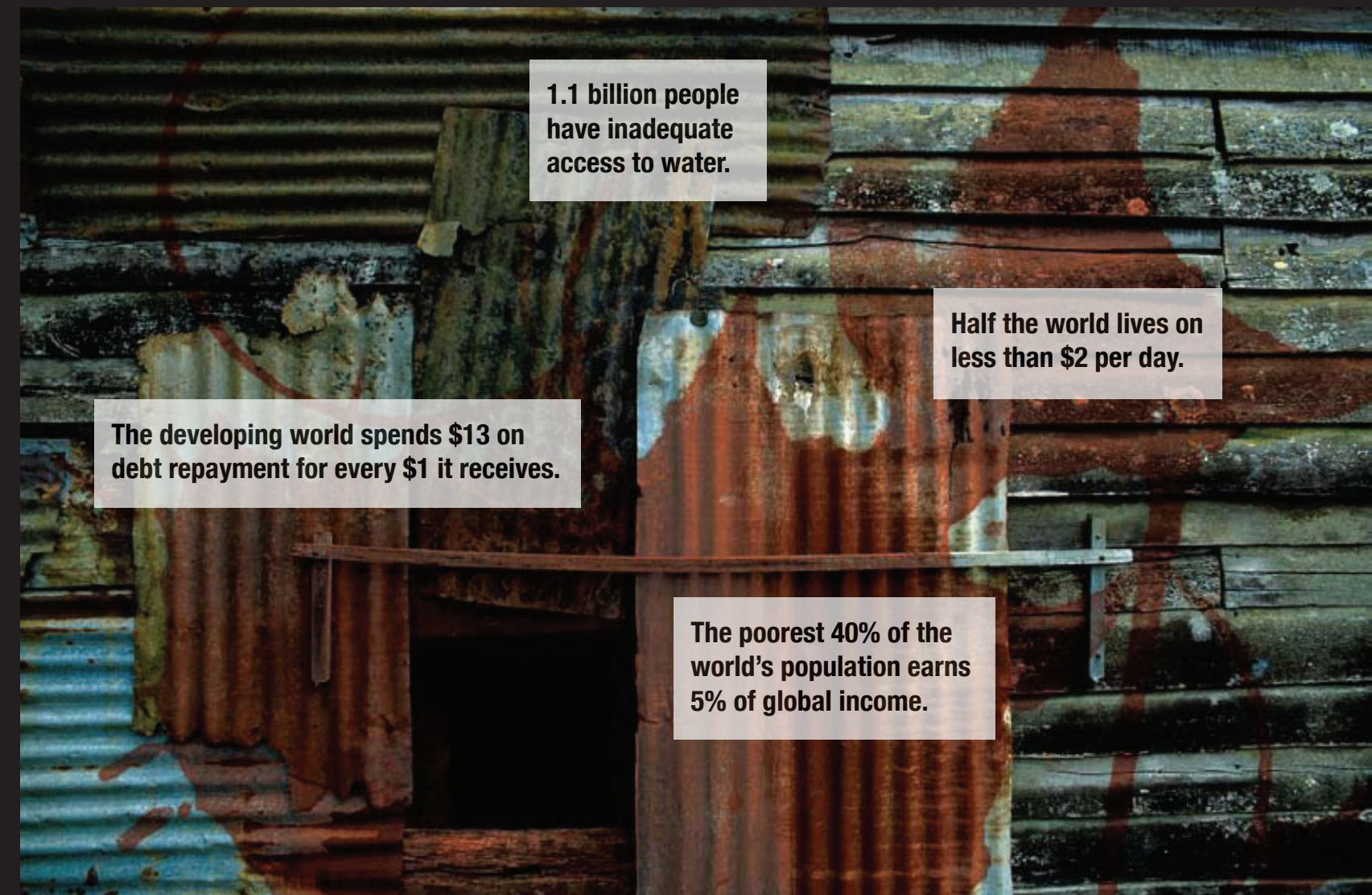
Kara Nelson --- Associate Professor, Civil & Environmental Engineering

Aihwa Ong --- Professor, Anthropology

Isha Ray --- Associate Professor, Energy & Resource Group

Raka Ray --- Professor, Sociology & South and South East Asia Studies
Chair, Center for South Asia Studies

Nora Silver --- Adjunct Professor, Haas School of Business and Director
Center for Nonprofit and Public Leadership



1.1 billion people
have inadequate
access to water.

Half the world lives on
less than \$2 per day.

The developing world spends \$13 on
debt repayment for every \$1 it receives.

The poorest 40% of the
world's population earns
5% of global income.

Blum Center

University of California, Berkeley

100 Blum Hall, #5570

Berkeley, CA 94720-5570

phone: 510.643.5316

web: blumcenter.berkeley.edu

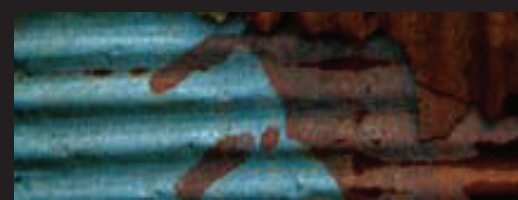
email: gppminor@berkeley.edu

global poverty and practice minor

Blum Center for Developing Economies

International and Area Studies

University of California, Berkeley



global poverty and practice minor

The Minor is organized around five course requirements and a practicum:

Core Sequence

- 1) Global Poverty: Challenges and Hopes in the New Millennium (GPP 115)
↓
- 2) The Ethics, Methods, and Pragmatics of Global Practice (GPP 105)
↓
- 3) Practice Experience
↓
- 4) Reflection Seminar (GPP 196 or thesis)

Directed Electives

- Global and Area Studies (1 course)
- Sectors and Methods (1 course)
- Students whose major field of study is in the College of Letters & Science (L&S) and Natural Resources (CNR) should note that their college allows only one course to overlap between a Major and Minor. Other colleges (e.g. Chemistry, Environmental Design, Engineering, Haas) do not have this policy.*

Declaring the Minor

Students wishing to pursue the Global Poverty and Practice Minor must declare their interest. The declaration form can be found at <http://blumcenter.berkeley.edu/gppminor>

Declaring will allow the student to meet with advisors to discuss and plan for their practice experience. It will also give priority for enrollment in Blum Center sponsored courses and allow entry into the GPP 105 core course, which is *open only* to students who have declared the Minor.

Declaration Deadlines

- October 13, 2011 for Spring 2012 admission to the Minor
- April 4, 2012 for Fall 2012 admission to the Minor
- October 10, 2012 for Spring 2013 admission to the Minor

Completing the Minor

Upon completion of the Minor, students must submit a Completion of L&S Minor form to the GPP office. Submission of a completion form is required in order to have the Minor noted on the official UC Berkeley transcript.

For additional information contact: gppminor@berkeley.edu

Core Sequence

The core sequence anchors the Global Poverty and Practice Minor by providing foundational understanding of development, poverty, and inequality. It demonstrates the linkages between knowledge and empirical methodologies and between critical theory and global practice.

GPP/CP 115: Global Poverty: Challenges and Hopes in the New Millennium (4 units, fall)
Students participate in the key theoretical debates about global poverty and inequality. This course teaches students about different models of poverty alleviation and methods for evaluating such models and practices.

GPP 105: The Ethics, Methods, and Pragmatics of Global Practice (4 units, fall/spring)
This course exposes students to a diversity of methodological frameworks and techniques and also allows students to discuss, reflect upon, and debate the ethics of global citizenship. Students work on projects and assignments that support preparation for their Minor practice experience.

Practice Experience

This requirement is the signature element of the Global Poverty and Practice Minor. Students participate in a transformative practice experience and creatively and critically reflect upon this experience as a key part of their academic accomplishments. Here “practice” entails not simply field experience but also an analytical capacity to grapple with complex global problems. The expectation is that students will make a meaningful contribution to an organization and community. However, while in the field students may discover that they gain much more learning than they could ever give back in service to their hosts.

The Global Poverty and Practice Minor does not slot students into existing internships or volunteer positions. Students will explore and identify opportunities that match their own interests within the context of poverty action, negotiate the terms of their practice experience, and learn important skills from this approach. They will be supported through this process by Advisors and resources available through the Minor.

Reflection Seminar

Students can complete the Reflection Seminar requirement through either of the following courses:

- 1) GPP 196 (3 units, fall/spring)
Students have the opportunity to critically reflect on what they have learned through the Minor. This reflection allows each student to consider their place in the world and the ways in which their understanding of global poverty will shape their future career and personal decisions.
- 2) Major Thesis
Complete a thesis that meaningfully integrates a scholarly, pragmatic or personal reflection of the student’s practice experience as part of a thesis course in the major field of study.

Directed Electives

Global and Area Studies

The intent of this directed elective is to provide a foundation for students in a specific geographical context for understanding poverty and poverty alleviation. Known as area studies, such a framework encourages students to select a world-region/country in which they may wish to gain deeper knowledge and complete their practice experience. An Area Studies elective should have a geographical connection to the location of a student’s practice experience. For students more interested in transnational and global processes, the global studies category provides analysis of global assemblages, flows, disjunctures and opportunities.

Sectors and Methods

The intent of this directed elective is to provide students with an understanding of specific issues and develop skills associated with different domains of poverty analysis and poverty alleviation. Such knowledge is an integral component of both the theoretical understanding of poverty and of the ability to act effectively in the sector of international development.

For up-to-date elective course lists visit <http://blumcenter.berkeley.edu/gppminor>

